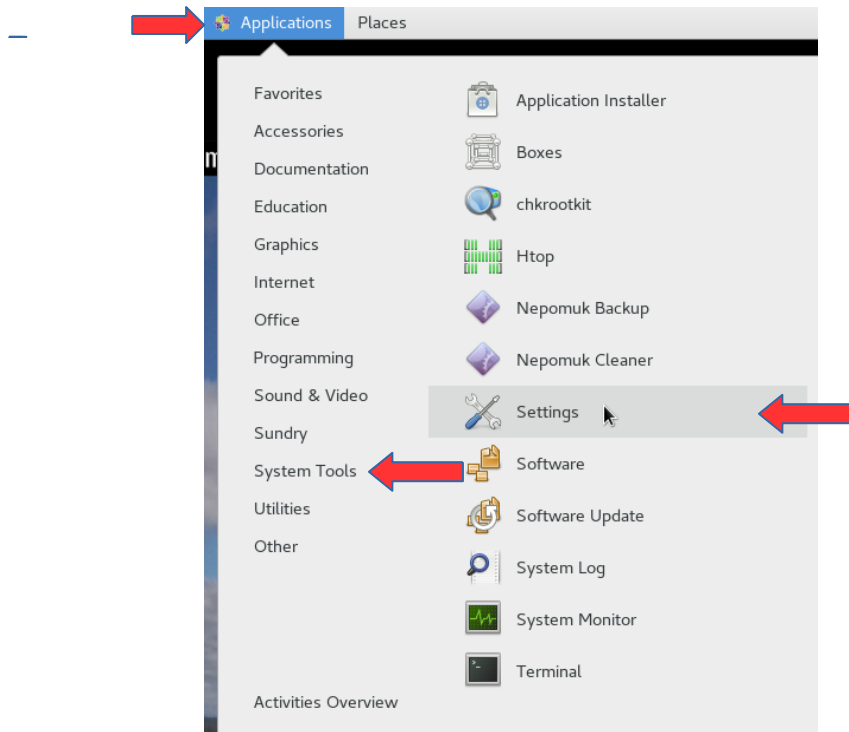
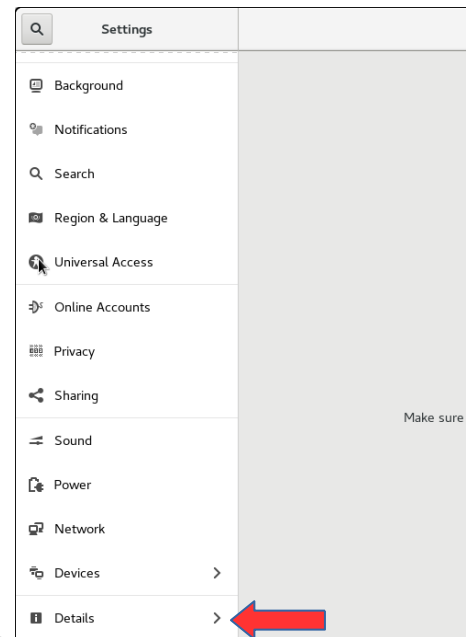


Linux Monitor Settings

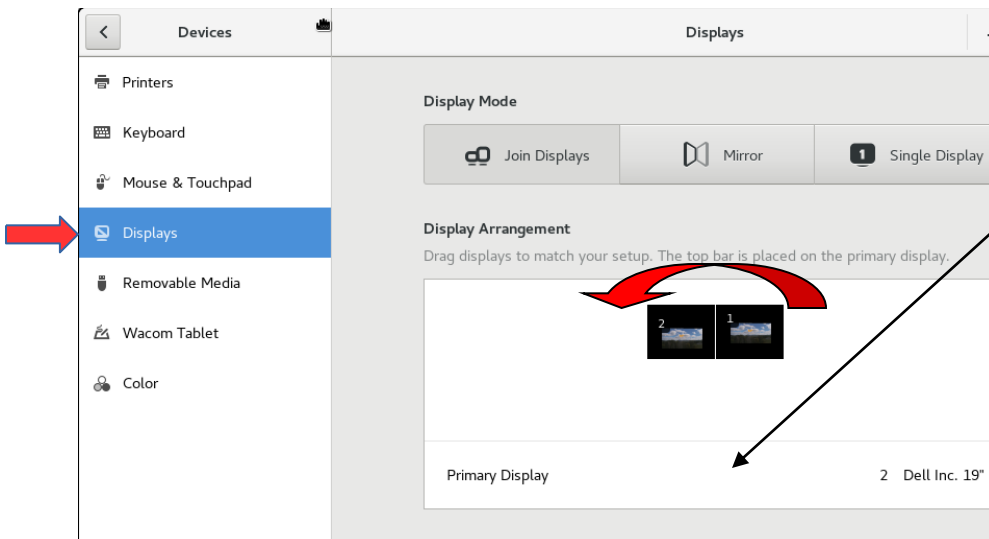
1. Click **Applications** → **System Tools** → **Settings**



2. Scroll to the bottom of the items on the left on the Settings window. Click on **Devices**



3. Click on **Displays**. Click and drag one display to the opposite side of the other display.



4. Click **Primary Display** and select the other display. Click the blue **Apply** button in the upper right.

Click **Keep Changes**