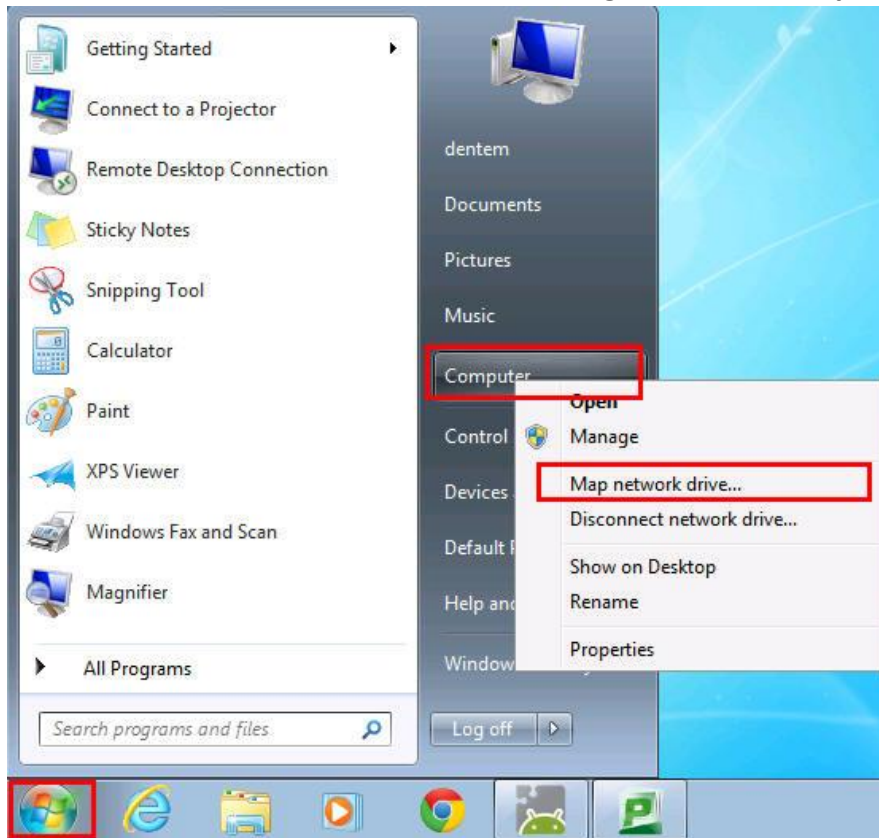


Mapping Linux Share on Windows

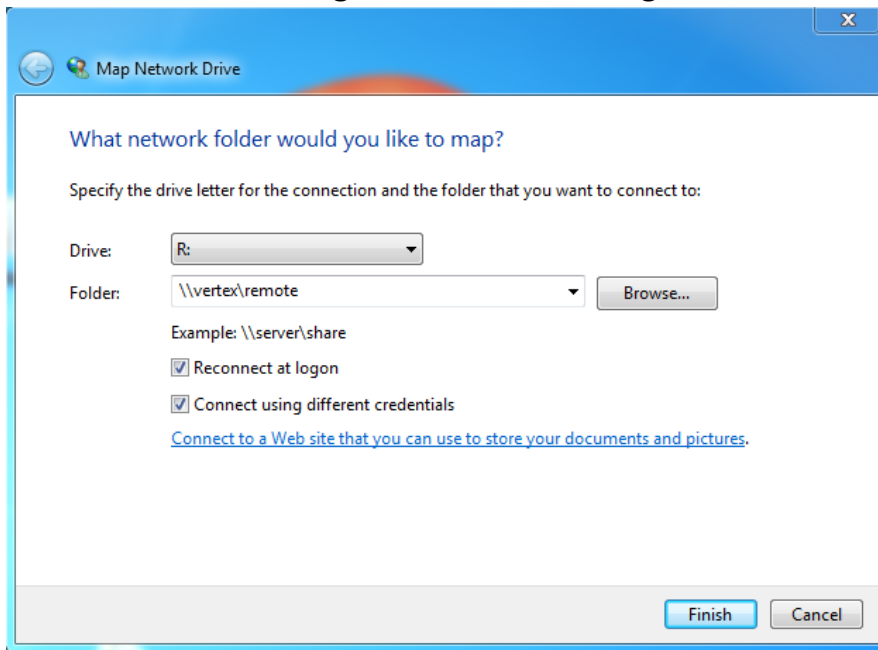
1. Click the **Start** menu on the taskbar, and right click on **Computer**. Click on **Map Network Drive**.



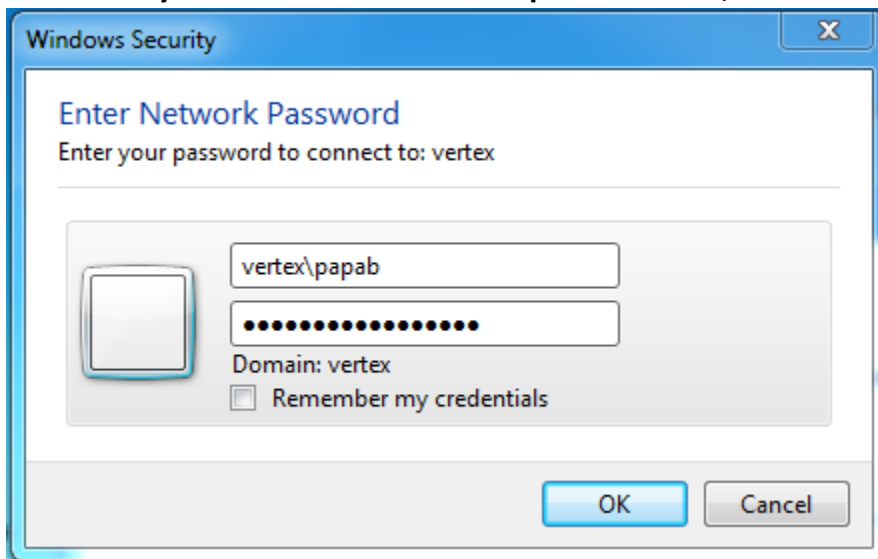
2. Choose an available drive letter from the list. It does not matter which letter you choose.
3. In the **Folder:** field, type the path to the share: `\\vertex\sharename`
Replace *sharename* with one of the following, depending on which share you'd like to map:
 - **homes** Connect to your home directory on the Linux system (*full permissions*)
 - **meso** For Dr. Atkins's Mesoscale Meteorology course content (*read only*)
 - **remote** For Dr. Atkins's Remote Sensing course content (*read only*)

Note: additional shares exist with permissions that are more restrictive. Contact the ATM System Administrator for further details.

4. Ensure **Reconnect at logon** and **Connect using different credentials** are checked.



5. Click **Finish**. Enter your Linux username and password (*not your Windows username and password*). The username should be preceded by **vertex** (see image below). **If you are not sure what your Linux username and password are, contact the ATM System Administrator.**



6. Click **OK** and you will see the contents of the share you connected to.